

# INFORMATION SHARING - SUMMER 2025

Activities/sessions coming up over the Summer for Children, Young People and Families

*Sandwell Family Life*




*...plus much more!*

Close to **750 activities** listed for children, young people and families!




**let's go...**



**What will you do to get involved?**

Helping out in Sandwell is different for everyone.

Have a browse of **over 300** volunteering opportunities in Sandwell



**ROUTE 2 WELLBEING**



**Over 700** health and wellbeing activities listed for adults in Sandwell





PLEASE NOTE: ACTIVITIES/SESSIONS ARE LISTED IN NO PARTICULAR ORDER. FOR FURTHER DETAILS, PLEASE CONTACT PROVIDER DIRECT – THANK YOU

**1**

# Summer of fun

**FOR SANDWELL'S CHILDREN AND YOUNG PEOPLE**

## Your guide to activities across Sandwell this summer

### Join us for a bostin summer of fun activities

Sandwell Council's Youth Service will be running free holiday activity and food programmes in Sandwell parks and open spaces across the six towns.

A range of activities aimed at 11 to 19-year-olds (up to 25 for those with SEND), supported by the Holiday Activities and Food (HAF) programme, will be offering some bostin fun and excitement for young people. Check out details for our activity days on page 3.

Young people will be able to access our NEW Youth Bus – kitted out with the latest technology and gadgets. Scale the heights on our mobile climbing wall and take part in multi sports, graffiti art and laser fun. Back by popular demand is our skate park coaching and competitions which will be returning to Brunswick Park, Britannia Park and Victoria Park, Tipton.

And don't miss our summer holiday adventure days at Malthouse Outdoor Activity Centre in Tipton. For children aged eight and over to try out canoeing, climbing, abseiling and archery. Email [youngpeople\\_services@sandwell.gov.uk](mailto:youngpeople_services@sandwell.gov.uk) to find out more and book places.

**SANDWELL Holiday Activities**

**JUST YOUTH**

Visit [www.justyouth.org.uk](http://www.justyouth.org.uk) for more information on activities and programmes or follow us on Facebook (search 'JustYouthSandwell').

# SCHOOL HOLIDAYS TO REMEMBER!

**free activities for children and young people**

## Exciting summer activities for children

As the summer holidays draw near, brace yourself for a spectacular line-up of Sandwell Holiday Activities to keep your youngsters entertained and active.

Funded by the Department for Education, Holiday Activities provide fantastic opportunities for children and young people to explore new interests, create friendships and have fun. Whether it's sports, music, dance, art, drama, cooking or day trips, there's something for everyone.

If your child receives free school meals based on benefits, you'll receive a Holiday Activities and Food (HAF) e-voucher. This voucher will come with a unique code and booking instructions via email or text.

Head over to [holidayactivities.sandwell.gov.uk](http://holidayactivities.sandwell.gov.uk) to find activities offering FREE universal or subsidised spaces. Stay updated by following 'Sandwell Holiday Activities' on Facebook.

### Go Play Sandwell

Become part of the fantastic Go Play Sandwell family with Sandwell Council's play service.

Dive into a summer packed with indoor and outdoor fun including arts and crafts, archery, mud painting, family games and much more! All you need to do is check what's on in your area, show up and play – all at no cost!

Amazing FREE play sessions are available for all school aged children and families across the borough all year round.

Check out our play sessions calendar at [www.goplaysandwell.co.uk](http://www.goplaysandwell.co.uk) for a full calendar of events and contact details. Follow 'Go Play Sandwell' on Facebook.

Let's make this summer unforgettable with a great range of exciting activities for children and young people of all ages in Sandwell!

**Department for Education**

**Sandwell**

**PLAY**

**2**

# Summer of fun

**FOR SANDWELL'S CHILDREN AND YOUNG PEOPLE**

## Sandwell celebrates National Play Day

Join us as we celebrate the National Play Day – which is back for its 16th year, having already delighted over 10,000 children and families.

Enjoy free food workshops, Doh! drumming workshops and theatre productions. Engage in play across the entire site with sporting activities and crafts. Pack a picnic and enjoy the summer fun! Don't miss out on this fun-filled day of play and entertainment!

Check out our National Play Days summer dates for more FREE events happening near you across the summer holidays.

Go to [www.goplaysandwell.co.uk](http://www.goplaysandwell.co.uk) for more information.

**NATIONAL PLAY DAY Summer Dates**

12 JULY LIGHTHOUSE HOUSE BRUNNIA LANE WIDEN	16 AUGUST SANDWELL VALLEY WATSONS CENTRE BT1 4BL
15 AUGUST HARROGATE HILL HARROGATE ROAD B44 7BT	20 AUGUST BRIMMINGTON HILL HILL TOPS ROAD BT1 2BA

Go to [www.goplaysandwell.co.uk](http://www.goplaysandwell.co.uk) for more information.

## Join the Summer Reading Challenge and library activities

Sandwell Libraries celebrate in style this summer with the Story Garden Summer Reading Challenge.

The Summer Reading Challenge encourages repeated visits to libraries across the summer holidays, with fun incentives and stickers for taking part and certificates and medals for all children who complete the challenge. Aimed at children aged four and over, the Story Garden will explore the magic of nature and stories.

For younger audiences, all libraries will be holding interactive Play, Read sessions and, if you are lucky, you may see our very own Sandy Bear as he tours around the libraries. We will also be running a special Summer Reading Challenge for under-fours.

Every library will have a packed programme of storytelling, games and crafts – fun for all the family.

Contact your local library for their full programme – find out more at [www.sandwell.gov.uk/librariesonline](http://www.sandwell.gov.uk/librariesonline) and [www.visitandwell.co.uk](http://www.visitandwell.co.uk) or search 'Sandwell Libraries' on Facebook.

Visit [www.summerreadingchallenge.org.uk](http://www.summerreadingchallenge.org.uk) for the Summer Reading Challenge.

## Story Garden

## A sensational summer at Sandwell Museums

Discover and explore Sandwell Museums this summer and enjoy a world of creativity, adventure and entertainment for families to enjoy.

Get crafty and decorate bags, create phone charms with beads, make kites, turn nature into art and loads more!

Get messy with clay and make pots and tiles, enjoy seaside-themed fun with our sandpits and Punch and Judy shows, and be amazed with our science activities.

Travel back in time and join in the fun for Archaeology Week or be adventurous and active while solving problems with the army. Play games with Go Play Sandwell and bring a picnic to enjoy our grounds and beautiful buildings while you solve our trails.

We've also got our new exhibition – The Extraordinary, Ordinary – at Wednesbury Museum & Art Gallery celebrating creative and colourful things you might not expect to have been made in Sandwell during the Industrial Revolution.

Find out full details of what's on at [www.sandwell.gov.uk/joinmuseums](http://www.sandwell.gov.uk/joinmuseums), find out more about Sandwell Museums at [www.visitandwell.co.uk/sandwell-museums](http://www.visitandwell.co.uk/sandwell-museums) and follow us on social media @sandwellmuseums

**Sandwell Museums**

## Discover nature close to home

Visit Forge Mill Farm and Sandwell Valley Country Park this summer.

Enjoy local outdoor fun and make lasting memories at Sandwell Valley Country Park, which spans over 1,000 acres. Follow us on Facebook @SandwellValleyCountryPark for the latest updates on both Sandwell Valley and Forge Mill Farm.

Explore attractions such as Forge Mill Farm, the Sandwell Valley Visitor Centre, high ropes courses, an adventure playground, cycling trails and scenic walks.

Forge Mill Farm is home to rare animals like sheep alpacas and Highland cows. It's a fantastic educational destination for families and school groups, offering farm trails, interactive activities and a farm shop.

Go to [www.visitandwell.co.uk](http://www.visitandwell.co.uk) to check out all the activities and events on offer at Sandwell Valley Country Park and across Sandwell.

### Community events

Join in all the fun at exciting, family-friendly community events taking place this summer in Sandwell.

These include the Sandwell & Birmingham Meets, Europe's largest South Asian music festival, which takes place at Victoria Park in Smethwick on 19 to 20 July.

Visit [www.birminghammeets.com](http://www.birminghammeets.com) for more information and tickets.

In August, enjoy ONE Fest, a free celebration of African, Caribbean and South American arts and culture at Sandwell Valley Country Park from 23 to 25 August.

Register your free attendance for ONE Fest at [www.eventbrite.com](http://www.eventbrite.com) – search for 'ONE Fest'. The Meets and ONE Fest are community events organised by external organisations.

## Summer fun at leisure centres

Looking for ways to keep the kids active, engaged and having fun?

Sandwell Leisure Trust offers a fantastic range of children's activities – from exciting holiday camps and sports clubs to free swimming sessions and more.

Whether it's making new friends, learning new skills, or just burning off energy in a safe and fun environment, we've got something for every child.

Spaces fill up fast, so don't miss out! Explore all our activities at [www.all-leisure.co.uk/childrens-activities](http://www.all-leisure.co.uk/childrens-activities) and book now!

### Free swimming sessions available

Free swimming is available for Sandwell children aged 18 and under during designated sessions over the school summer holidays.

For Sandwell Leisure Trust centres – Sandwell Aquatics Centre, Tipton Leisure Centre and Wednesbury Leisure Centre – go to [www.all-leisure.co.uk/free-swimming-in-sandwell](http://www.all-leisure.co.uk/free-swimming-in-sandwell) or call 0300 012 0121.

For West Bromwich Leisure Centre, register for free swimming by visiting reception at the centre or call 0121 580 6430, or go to [www.placesleisure.org](http://www.placesleisure.org) and search 'West Bromwich Leisure Centre'.

## Stay safe, stay out!

Stay safe this summer and please only swim in purpose-built, supervised swimming pools.

Lakes, pools, ponds, canals and rivers may seem inviting on a warm summer's day, but please don't be tempted to swim in them. People can often misjudge their swimming ability. Even in hot weather, water can be icy cold a few feet beneath the surface and very quickly cause severe cramp and hypothermia.

Go to [www.sandwell.gov.uk/watersafety](http://www.sandwell.gov.uk/watersafety) for more advice.

**Visit Sandwell**



# Summer of fun

FOR SANDWELL'S CHILDREN AND YOUNG PEOPLE

## In your town

Our Youth Service will be running a number of activity days in key parks in each of our six towns this summer.

Our regular youth clubs will still be open during the evenings, as well as our youth workers being out and about throughout the summer on estates, parks and open spaces. They will be helping young people to find somewhere safe to go, something positive to do and someone to talk to.

Activity days are free and open to all young people (just turn up on the day). They will be running in a park in each town, offering a range of activities, thanks to funding from the Holiday Activities and Food (HAF) programme, including our climbing wall, graffiti art, laser fun and multi sports. Our amazing Youth Bus will be at some of these days too.

### Activity days in parks

Wed 23 Jul – Thu 24 Jul, 4pm-8pm	Branswick Park, Wednesbury WS10 9HH
Wed 30 Jul – Thu 31 Jul, 4pm-8pm	Britannia Park, Rowley Regis B65 9HH
Wed 6 Aug – Thu 7 Aug, 4pm-8pm	Lion Farm Playing Fields, Oldbury B69 1EA
Wed 13 Aug – Thu 14 Aug, 4pm-8pm	Red House Park, Great Barr B43 8NA
Wed 20 Aug – Thu 21 Aug, 4pm-8pm	Victoria Park, Smethwick B66 3QJ
Wed 27 Aug – Thu 28 Aug, 4pm-8pm	Victoria Park, Tipton DY4 8SW

Full details at [www.justyouth.org.uk](http://www.justyouth.org.uk)

Go Play Sandwell will also be running a number of free activities for children aged 5-12 at various locations in each of our six towns this summer; no need to book just turn up and play!

[www.goplaysandwell.co.uk](http://www.goplaysandwell.co.uk)

**SANDWELL**  
Holiday Activities

www.justyouth.org.uk

JUST YOUTH

Map showing activity locations in Tipton, Wednesbury, West Bromwich, Rowley Regis, Oldbury, and Smethwick.

## WHATEVER THE RESULT, WE'RE HERE TO HELP

Have you had your exam results and you're not sure what to do next?

Get specialised information, advice and guidance on weekdays Thursday 14 August to Friday 29 August, 10am – 4pm

See including: [www.sandwell.gov.uk](http://www.sandwell.gov.uk)

GET IN TOUCH

[www.sandwell.gov.uk](http://www.sandwell.gov.uk)

[sandwell\\_counselling@sandwell.gov.uk](mailto:sandwell_counselling@sandwell.gov.uk)

0121 569 2925

connections Sandwell

## 30 hours of childcare for eligible working families

From September 2025, eligible working parents can now apply for 30 hours of childcare from the term after their child turns 9 months until they start school.

If you currently receive 15 hours as a working family, just reconfirm as usual and the code will work for the 30 hours offer in September, providing you remain eligible and your provider has confirmed your new attendance pattern for your increased hours.

Remember to reconfirm your code every three months.

Visit [www.childcarechoices.gov.uk](http://www.childcarechoices.gov.uk) for information.

## Information for families

Sandwell Family Information Service (FIS) offers free, impartial information to families with children from birth to 19 years (or up to 25 years with a special educational need or disability), young people and professionals.

FIS can support you to help find the right childcare provider, help with childcare applications and answer any other childcare-related queries.

Visit the FIS Hub [fis.sandwell.gov.uk](http://fis.sandwell.gov.uk) for national and local services, activities and advice pages.

The hub includes the Sandwell All Age Emotional Wellbeing and Mental Health Directory which provides a wide range of local, regional and national support services for children, young people and their families.

**Sandwell**  
Family Information Service

## HEALTHY SANDWELL

Whether you want to quit smoking, manage your weight, get more active, improve your mental health or reduce alcohol, our friendly advisers are ready to support you.

Getting in touch is easy. Call 0800 011 4656 or 0121 569 5100, email [LS@hshs.net](mailto:LS@hshs.net) or text GETHEALTHY to 87007. Follow us on Facebook @HealthySandwell and visit [www.healthysandwell.co.uk](http://www.healthysandwell.co.uk) for more advice.

[www.healthysandwell.co.uk](http://www.healthysandwell.co.uk)

### Pregnant or a new parent?

Are you pregnant or a parent or carer with a child aged 0 to 4?

We are delighted to be able to offer FREE activity sessions for you and your child.

Go to [www.sandwellchanges.co.uk](http://www.sandwellchanges.co.uk) to find out more about our Changes Programme and to book your space.

### Family Hubs are here for you

Our Family Hubs offer the right help, in the right place, at the right time.

They offer free activities, services and support for all families in Sandwell with children aged 0 to 19 (or 25 with SEND) and extra support is available for families during pregnancy and in your baby's first years.

Visit [www.sandwellfamilyhubs.com](http://www.sandwellfamilyhubs.com) to see what we have on offer this summer at our seven Family Hubs across Sandwell.

### Courses to help parents and carers

Bringing up children is one of the hardest jobs out there! Children don't come with an instruction manual, and we all need a bit of help and guidance from time to time.

In Sandwell, we offer a range of support to help you on your parenting journey – from one-off sessions and online programmes to longer courses.

Search for 'programmes for parents' at [www.sandwellfamilyhubs.com](http://www.sandwellfamilyhubs.com) to find out more about what we have on offer this summer at our seven Family Hubs across Sandwell.

### Have fun and make happy memories together

Our Choices Team helps families with children aged 5 to 12 to join in free activities that support healthy eating, feeling good and staying active.

There's lots to try – like arts and crafts, gardening, games, horse riding, rock climbing and more.

All activities are free and take place throughout the year. There's something for everyone to enjoy!

Visit [www.bookwhen.com/choices](http://www.bookwhen.com/choices) or email the team at [choices\\_sandwell@sandwell.gov.uk](mailto:choices_sandwell@sandwell.gov.uk)

### Sandwell School Nursing Service

Do you have a question about your child's behaviour, toileting, diet or health? Does your child need some support regarding bullying or a healthier lifestyle?

School nurses can provide support and advice for a wide variety of health needs for children and young people to enable them to reach their full potential.

If you are a parent or carer of a child aged 5 to 19 in a Sandwell school and would like confidential advice and support, visit [www.healthysandwell.co.uk](http://www.healthysandwell.co.uk) for information or access. Call Health by Texting 07312 263 756 to contact a nurse directly.

All primary schools are offered the opportunity to host a parent drop-in facilitated by the School Nursing Service, so speak to your school to find out more.

Visit [www.healthysandwell.co.uk/school-nurse](http://www.healthysandwell.co.uk/school-nurse) to find out more.

### WorkWell in Sandwell

Across Sandwell, WorkWell is helping residents take meaningful steps towards employment, personal growth and improved wellbeing.

led by Black Country Healthcare NHS Foundation Trust, WorkWell offers tailored support for residents facing barriers to work, due to health conditions or disabilities.

Through one-to-one support and access to local resources, the service helps people build confidence, manage their health and explore routes into employment or training.

Visit [www.blackcountryhealthcare.nhs.uk/workwell](http://www.blackcountryhealthcare.nhs.uk/workwell) to find out more.

## Your first step towards a new smoke-free you...

**Stop For Life**  
Sandwell

FREE 1-2-1 support for people who live, work or have a registered GP in Sandwell

[StopForLifeSandwell.org](http://StopForLifeSandwell.org)

0800 612 4580

Text QUITNOW SANDWELL to 66777

## Our parks are wheeeeellie great!

Go, run, get moving. There's fun for all the family at your local park.

[www.sandwell.gov.uk/parks](http://www.sandwell.gov.uk/parks)

## Walking for men's mental health

A big thank you to everyone who joined us for our 52-kilometre Walk in the Park Challenge and stood shoulder to shoulder for men's mental health.

Councillor Jackie Taylor, Cabinet Member for Adult Services and Health and Wellbeing, and Councillor Luke Cottrell led a six-park, three-day walking challenge in June, which finished at West Smethwick Park.

Whether you walked with us, cheered everyone on or provided activities, games or advice along the way, thank you.

Visit [www.healthysandwell.co.uk](http://www.healthysandwell.co.uk) or call Healthy Sandwell on 0800 011 4656 for advice and support around mental health and wellbeing.

View the Summer of Fun brochure online [HERE](#)



Lots of fun exciting activities/sessions coming up at Sandwell Family Hubs over the summer - for further information about activities listed, please contact one of the Family Hubs – contact details can be found [HERE](#)

# READY FOR LEARNING SESSIONS

Is your little one starting nursery soon?

This is a great chance to come along and explore the skills to support your child to be ready for learning.

Lots of fun activities for you and your little one to enjoy.

Details of sessions are on each weeks timetables.

Sessions for children 18 months - upto 3 years (younger & older siblings are welcome)



All session content will be the same so please just come along to **one of these sessions during the summer** to enable as many families to access as possible over the summer

# STAY & PLAY SESSIONS

Sessions are for children aged 0 – 5

(Older siblings welcome)

These sessions will be based on a different story each week  
There are a few clues below to the stories we will be sharing!

## STAY & PLAY BENEFITS

- Make new friends
- Take part in fun activities
- Learn through play
- Develop speech & language skills
- Encourage turn taking and sharing
- Explore new and exciting opportunities
- Bring stories to life
- Share songs and rhymes with your children



All session content will be the same so please just come along to **one of these sessions during the week** to enable as many families to access as possible each week





**Week 1**

Starting 21st July 2025

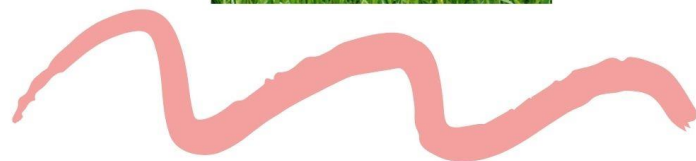


## STORY GARDEN SESSIONS

Tuesday 22<sup>nd</sup> July  
Blackheath  
Library  
10 - 11.15am



Tuesday 22<sup>nd</sup> July  
Wednesbury  
Library  
1.30 - 2.45pm



## READY FOR LEARNING SESSIONS

Thursday 24<sup>th</sup> July  
West Bromwich  
Central  
Family Hub  
10 - 11am



Thursday 24<sup>th</sup> July  
Smethwick  
Family Hub  
1 - 2pm

Friday 25<sup>th</sup> July  
Oldbury Family Hub  
10 - 11am



# STAY & PLAYS

**Week 1**

### Oldbury

Oldbury Family Hub

Wednesday  
1 - 2pm

### Smethwick

Smethwick Family Hub

Wednesday  
1 - 2pm

### Rowley

Flying Start

Thursday  
10 - 11am

### Tipton

Great Bridge  
Library

Tipton  
Family Hub

Wednesday  
10-11am

Friday  
1 - 2pm

### Wednesbury

Wednesbury Family Hub

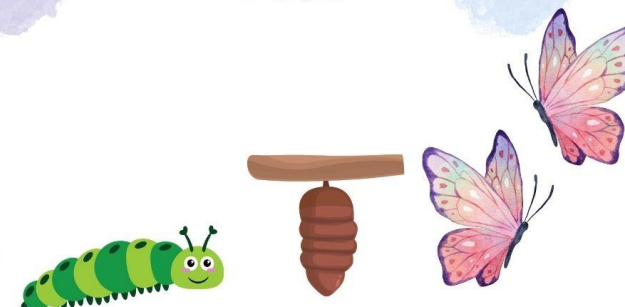
Wednesday  
1 - 2pm

### West Bromwich

West Bromwich Central Family Hub

Friday  
1 - 2pm

*VERY hungry*





**Week 2** Starting 28th July 2025

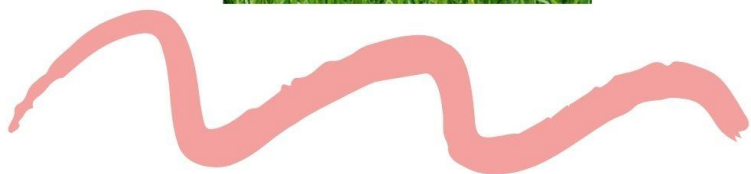


## STORY GARDEN SESSIONS

Tuesday 28th July  
Great Barr  
Library  
10 - 11.15am



Friday 1<sup>st</sup> August  
Glebefields  
Library  
10-11.15am



## READY FOR LEARNING SESSIONS

Monday 28<sup>th</sup> July  
Tipton Family Hiub  
1 - 2pm



Wednesday  
30<sup>th</sup> July  
Rowley Family  
Hub  
1 - 2pm

Tuesday 29<sup>th</sup> July  
Rowley Family Hub  
1 - 2pm

Wednesday 30<sup>th</sup> July  
Wednesbury Family Hub  
10 - 11am

# STAY & PLAYS

**Week 2**

### Oldbury

Oldbury Family Hub

Mondays Wednesday  
10 - 11am 1 - 2pm

### Smethwick

Smethwick Family Hub

Monday Wednesday  
10 - 11am 1 - 2pm

### Rowley

Rowley Flying Start  
Family Hub

Mondays Thursday  
1 - 2pm 10 - 11am

### Tipton

Great Bridge Tipton  
Library Family Hub

Wednesday Friday  
10-11am 1 - 2pm

### Wednesbury

Wednesbury Family Hub

Mondays Wednesday  
10 - 11am 1 - 2pm

### West Bromwich

West Bromwich Central Family Hub

Tuesday Friday  
9.30 - 10.30am 1 - 2pm





**Week 3**

Starting 4<sup>th</sup> August 2025

**Take a Peek**



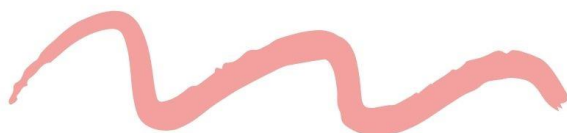
## STORY GARDEN SESSIONS

Tuesday 5<sup>th</sup> August  
Thimblemill  
Library  
10 - 11.15am



Tuesday 5<sup>th</sup> August  
Bleakhouse Library  
10 - 11.15am

Friday 8<sup>th</sup> August  
Stone Cross  
Library  
10 - 11.15am



## READY FOR LEARNING SESSIONS

Monday 4<sup>th</sup> August  
Tipton Family Hub  
1 - 2pm



Friday 8<sup>th</sup> August  
Smethwick  
Family Hub  
10 - 11am

Tuesday 5<sup>th</sup> August  
Rowley Family Hub  
1 - 2pm

Wednesday 6<sup>th</sup> August  
Oldbury Family Hub  
1.30 - 2.30pm

Thursday 6<sup>th</sup> August  
West Bromwich  
Central Family Hub  
10 - 11am



## STAY & PLAYS

**Week 3**



### Oldbury

Oldbury Family Hub

Mondays Wednesday  
10 - 11am 1 - 2pm

### Smethwick

Smethwick Family Hub

Monday Wednesday  
10 - 11am 1 - 2pm

### Rowley

Rowley Flying Start  
Family Hub

Monday Thursday  
1 - 2pm 10 - 11am

### Tipton

Great Bridge Tipton  
Library Family Hub

Wednesday Friday  
10-11am 1 - 2pm



### Wednesbury

Wednesbury Family Hub

Mondays Wednesday  
10 - 11am 1 - 2pm

### West Bromwich

West Bromwich Central Family Hub

Tuesday Friday  
9.30 - 10.30am 1 - 2pm





Week 4

Starting 11<sup>th</sup> August 2025

Take  
a  
Peek



## READY FOR LEARNING SESSIONS

Tuesday 12<sup>th</sup> August  
Wednesbury  
Family Hub  
1 - 2pm

Friday 15<sup>th</sup> August  
Smethwick  
Family Hub  
10 - 11am

Wednesday 13<sup>th</sup> August  
Oldbury Family Hub  
1.30 - 2.30pm

Friday 15<sup>th</sup> August  
Rowley  
Family Hub  
10 - 11am



Thursday 14<sup>th</sup> August  
West Bromwich  
Central Family Hub  
1 - 2pm

Thursday 14<sup>th</sup> August  
Tipton Family Hub  
11.30 - 12.30



# STAY & PLAYS

Week 4

## Oldbury

Oldbury Family Hub

Mondays Wednesday  
10 - 11am 1 - 2pm

## Smethwick

Smethwick Family Hub

Monday Wednesday  
10 - 11am 1 - 2pm

## Rowley

Rowley Flying Start  
Family Hub

Monday Thursday  
1 - 2pm 10 - 11am

## Tipton

Great Bridge Tipton  
Library Family Hub

Wednesday Friday  
10-11am 1 - 2pm

## Wednesbury

Wednesbury Family Hub

Mondays Wednesday  
10 - 11am 1 - 2pm

## West Bromwich

West Bromwich Central Family Hub

Monday Friday  
9.30 - 10.30am 1 - 2pm





**Week 5**

Starting 18<sup>th</sup> August 2025

*Take a Peek*



## STORY GARDEN SESSIONS

Tuesday 22<sup>nd</sup> July  
Oakham  
Library  
10 - 11.15am



## READY FOR LEARNING SESSIONS

Tuesday 19<sup>th</sup> August  
Wednesbury  
Family Hub  
1 - 2pm



Thursday 21<sup>st</sup> August  
Tipton Family Hub  
11.30 - 12.30

Thursday 21<sup>st</sup> August  
West Bromwich Central  
Family Hub  
1 - 2pm

Friday 23<sup>rd</sup> August  
Rowley Family  
Family Hub  
10 - 11am

# STAY & PLAYS

**Week 5**

## Oldbury

Oldbury Family Hub

Mondays Wednesday  
10 - 11am 1 - 2pm

## Smethwick

Smethwick Family Hub

Monday Wednesday  
10 - 11am 1 - 2pm

## Rowley

Rowley Flying Start  
Family Hub  
Monday Thursday  
1 - 2pm 10 - 11am

## Tipton

Great Bridge Tipton  
Library Family Hub  
Wednesday Friday  
10-11am 1 - 2pm

## Wednesbury

Wednesbury Family Hub

Mondays Wednesday  
10 - 11am 1 - 2pm

## West Bromwich

West Bromwich Central Family Hub

Monday Friday  
9.30 - 10.30am 1 - 2pm





Week 6

Starting 25<sup>th</sup> August 2025

# SPEECH & COMMUNICATION DROP IN SESSIONS

IS YOUR CHILD  
AGED  
**18 - 24  
MONTHS**

Would you like to explore your child's current  
language skills?  
or

Do you have any concerns regarding your  
child's speech & language development?

If so please feel to come along to the session below

Oldbury Family Hub  
Wednesday 27<sup>th</sup> August  
9 - 12 & 1 - 4pm

Smethwick Family Hub  
Wednesday 27<sup>th</sup> August  
9 - 12 & 1 - 4pm

West Bromwich Central Family Hub  
Thursday 28<sup>th</sup> August  
9 - 12 & 1 - 4pm

Tipton Family Hub  
Friday 29<sup>th</sup> August  
9 - 12 & 1 - 4pm

Rowley Family Hub  
Friday 29<sup>th</sup> August  
9 - 12 & 1 - 4pm

Wednesbury Family Hub  
Friday 29<sup>th</sup> August  
9 - 12 & 1 - 4pm

CONTACT DETAILS

For further information please call 0121 500 4011

SUMMER  
FUN

Bring the whole  
family for a fun  
filled fun day  
with laughter,  
excitement, and  
fun

Event Highlights

GAMES & ACTIVITIES  
INFORMATION STALLS  
RAFFLE AND TOMBOLA  
FOOD & REFRESHMENTS  
CRAFT ACTIVITIES

Join Us for  
a  
Spectacular  
Family Fun  
Day!

Some games and activities will have a small charge

Saturday 2<sup>nd</sup> August  
West Bromwich Central  
Family Hub  
10 - 2pm

Wednesday 6<sup>th</sup> August  
Rowley Family  
Hub  
10 - 2pm

Saturday 9<sup>th</sup> August  
Tipton Family Hub  
10 - 2pm

Tuesday 12<sup>th</sup> August  
Wednesbury  
Family Hub  
10 - 2pm

Thursday 14<sup>th</sup> August  
Oldbury Family  
Hub  
10 - 2pm

Tuesday 19<sup>th</sup> August  
Smethwick Family  
Hub  
10 - 2pm

For more information give your local hub a call



# Family Drop In Sessions

Parenting does not come with a handbook so we have some different sessions to help you on your parenting journey. Each week has a different focus for you to come and find out more about. Our fab parenting team will be on hand to support you to find out more. Each week we will be exploring and supporting with a different topic!

## Week 1-

What's on and free in Sandwell over the summer holidays for you and the family to enjoy

## Week 2-

Are you pregnant or have a child under 2 years? Come along and ask a midwife any questions you may have and find out about the great sessions that we offer during pregnancy and once your baby is born or now they are here

## Week 3-

Have you completed Cygnet program – do you have other children? This session will offer support, information and strategies in relation to children with a brother or sister on the autistic spectrum.

## Week 4

Now we are coming towards the end of the summer fun come along to get some resources and fun ideas to get your routines into place ready for September – fun activities for you to create and take home to keep.

## Week 5

Are you caring for a child or young person as a connected person, foster carer or have you adopted. Come along and see what support we offer at the Family Hubs.

## Week 6

Come along and find out some different strategies to prepare yourself and your children to return back to school next week!

To find out more call 0121 556 5405 and ask for the parenting team



**BARNARD'S**

# Baby Clubs

Sandwell  
**Family Hubs**  
Helping Families Thrive

For Babies 0 - 12 Months

**Monday**Flying Start  
Clifton Street, B64 6QJ  
10 - 11amLightwoods House  
Smethwick, B67 5DP  
1 - 2pm**Tuesday**Oldbury Family Hub  
Oldbury, DY4 7SD  
10 - 11am.**Wednesday**Smethwick Family Hub  
Smethwick, B66 3PH  
11 - 12noonWest Bromwich Central Family Hub  
West Bromwich, B70 9EZ  
1 - 2pm**Thursday**Tipton Family Hub  
Tipton, DY4 0TB  
10 - 11amYew Tree & Tame Bridge  
Community Centre, WS5 4LB  
9.30 - 10.30amWednesbury Family Hub  
Wednesbury, WS10 0JG  
1.30 - 2.30pm**Baby Clubs are  
a great place for  
Parent/Carers to...**

- Meet other new parents
- Learn about baby development
- Take part in sensory play
- Talk to experienced staff

For more  
information  
please contact  
your local  
Family Hub

Sandwell  
**Family Hubs**  
Helping Families Thrive**BARNARD'S**

## WELCOME TO PARENTHOOD

Would you like to come and meet with other parents?  
Take part in some fun activities with your baby?  
If so come along to one of our great sessions below  
to book your place click the link or scan the QR code

**Mondays**Triple P Baby  
Oldbury Family Hub  
9.30-11.30am  
Starts 1<sup>st</sup> September**Tuesdays**Triple P Baby Antenatal  
Wednesbury Family Hub  
9.30- 11.30am  
Starts 2<sup>nd</sup> September**Wednesdays**Solihull Approach  
Wednesbury Family Hub  
9.30 - 11.30am  
Starts 3<sup>rd</sup> September**Thursdays**Triple P Baby  
Rowley Family Hub  
9.30 - 11.30am  
Starts 5<sup>th</sup> June**Mondays**Triple P Baby  
West Bromwich Central  
Family Hub  
1 - 3pm  
Starts 14th July**Tuesdays**Triple P Baby  
Tipton Family Hub  
1 - 3pm  
Starts 24th June**Wednesdays**Triple P Baby  
Smethwick Family Hub  
1 - 3pm  
Start at anytime

Solihull Approach is run over ten weeks - this programme will help you explore your thoughts and feelings and what is being communicated by your baby or young child through their behaviour. It will also support you to develop positive parenting and help you to find out about different ways to communicate.

If you would like to you can bring your little ones along to these sessions with you (up to 2 years) and there will be activities for them to explore during the session.

Triple P Baby is an 8 week set of sessions where you get to explore parenting your new baby. Sessions will help to:

- Understand and respond to your baby's cues
- Explore looking after your own emotional wellbeing
- Support your baby's social and cognitive development
- Take part in fun activities with your baby
- Meet other parents
- Explore the Family Hub offer

These sessions can be accessed Antenatally and after your baby has been born.

Sessions are for babies aged 0 - 12 months & their parents



To book a place for you  
and your baby



0121 556 5405





**BARNARDO'S**

# Welcome to your Town Sessions!

Are you a new parent?

Are you new to Sandwell?

Why not come and find out what services are available to you and your family in your town!!

Healthy Start (NHS) will also be there on the day

Please drop-in to one of your local sessions below:

FREE Activities available for children

*When*

*Where*

8th July 2025	1pm – 3pm	Wednesbury Family Hub WS10 0JG
15th July 2025	1pm – 3pm	West Bromwich Central Family Hub B70 9EZ
22nd July 2025	1pm – 3pm	Smethwick Family Hub B66 3PX
12th August 2025	1pm – 3pm	Rowley Family Hub B65 8JY
26th August 2025	1pm – 3pm	Tipton Family Hub DY4 0TB

Come

Along

## Free, Fun Family Activities this summer!

From 21 July until the end of August  
For families with children aged 5 - 12

- Choices Fun Day
- Fishing
- Swimming
- Sport Sessions
- Gym Sessions
- Badminton
- Archery
- Arts and crafts



Book online using the website or QR code:  
[www.bookwhen.com/choices](http://www.bookwhen.com/choices)

For further information, contact:  
Choices\_Sandwell@sandwell.gov.uk  
0121 569 5100



**Sandwell**  
Metropolitan Borough Council

**Choices**

**HEALTHY SANDWELL**  
We find the support you need





Join us for our

# Black Country Day Event

Thursday 24<sup>th</sup> July The Bridge, St Marks Road  
Tipton, DY4 0SL

12pm - 3pm

FREE ENTRY

Join us for

Black Country Best Dressed Competition!

DJ

Games

Refreshments

and More!

For further information please call 01902 826 513

Charity No. 1076896 | Company No: 03692018 Registered in England & Wales



## PLACES WHERE KIDS EAT FREE (OR FOR £1) SUMMER HOLIDAYS 2025

[moneysavingcentral.co.uk/kids-eat-free](https://moneysavingcentral.co.uk/kids-eat-free)



### ANGUS STEAKHOUSE

Kids under 8 eat FREE daily, 12pm to 5pm

### ASDA

Kids eat for £1 daily, with no adult spend

### ASK ITALIAN

Kids under 10 eat for £1 during school holidays

### BEEFEATER

Kids Eat FREE with Newsletter Voucher this Summer

### BELLA ITALIA

Children eat for £1 with any adult main

### BILLS

Kids Eat Free weekdays, 21st July – 29th Sept

### BREWERS FAYRE

Kids Eat FREE with Newsletter Voucher this Summer

### BREWDOG

2 Kids eat free with 1 adult, 19th July - 31st August

### BURGER KING

From 28th July - 31st August, Kids Eat Free (via app)

### CHIQUITO

Kids eat FREE Daily Until August 31st

### DOBBIES GARDEN CENTRES

Kids eat for £1 with an adult breakfast or lunch

### FRANKIE & BENNY'S

Kids Eat Free from 14<sup>th</sup> July – 31<sup>st</sup> August 2025

### FUTURE INNS

Under 5s eat for free with any adult meal

### GORDON RAMSEY RESTAURANTS

Kids under 10 eat FREE all day, every day

### HARVESTER

Kids eat for £1, Mon - Fri via the App

### HUNGRY HORSE

Kids eat for £1 on Mondays

### IKEA

Kids get a meal from 95p daily from 11am

### LAS IGUANAS

Kids under 12 eat FREE with 'My Las Iguanas' App

### MARCO PIERRE WHITE

Kids under 12 Eat FREE daily with an adult spend

### MORRISONS

Kids Eat FREE all day, every day with a £5 spend

### PAUSA CAFE @ DUNELM

Kids eat FREE with every £4 spend after 3pm

### PREMIER INN & TRAVELODGE

2 kids eat for FREE with 1 adult breakfast

### PRETO

Kids up to age 10 eat free with 1 paying adult

### PUREZZA

Kids under 10 get free pizza with every adult meal

### SA BRAINS PUBS

Kids eat for £1 on Wednesdays

### SIZZLING PUBS

Kids eat for £1, Every Monday to Friday, 3 - 7pm

### TABLE TABLE

2 Kids Eat free breakfast daily with 1 paying adult

### TESCO

Kids Eat FREE with a 60p spend until Aug 31st

### TGI FRIDAYS

Kids Eat Free with any adult meal (Via App)

### THE REAL GREEK

Kids under 12 eat FREE Sundays with £10 spend

### TOBY CARVERY

Kids eat for £1 all day (weekdays) until Aug 29th

### WHITBREAD INNS

2 kids eat for FREE with 1 adult breakfast

### YO! SUSHI

Kids eat free all day (weekdays) in school holidays

### ZIZZI

Kids eat free this summer holidays (ex Saturdays)

Copyright of MONEY SAVING CENTRAL



# Summer Holiday Adventure Days at Malthouse Outdoor Activity Centre

For young people aged 8+ who live in Sandwell

**Canoeing - Climbing and Abseiling - Archery**



Monday 21 July & Tuesday 22 July

Monday 4 August & Tuesday 5 August

Monday 11 August & Tuesday 12 August

Monday 18 August & Tuesday 19 August

9:30am - 2:30pm

£35.00 per day

Please bring your own lunch

Book your place and find out more:

[youngpeople\\_services@sandwell.gov.uk](mailto:youngpeople_services@sandwell.gov.uk)



## UNITY BREW COMMUNITY CAFE GRAND OPENING



23rd July 2025, 10am-12pm

15 Unity Walk, DY4 8QL

Enjoy free kids' activities, welcome hot drinks, and meet

Wolves legend-

**Steve Bull!**

Powered by



Follow us on  
Facebook





**FREE ENTRY**

# ONE FEST

*Art, Heritage and Culture*

**SAT 23 -  
MON 25  
AUG 2025**




**MACKA B**  
International Reggae Artist  
and Live Band

**11AM - 8PM**

**SANDWELL VALLEY PARK  
SALTER'S LANE, WEST  
BROMWICH B71 4BG**

**STALL HOLDERS 0121 798 9028**

**ONE FEST**

Sponsored by Sandwell Arts Council  
ARTS COUNCIL  
ENGLAND

Sandwell  
Metropolitan Borough Council

# Smile Fest

*fun & games*

**FREE ENTRY**

**ONE FEST**

**Saturday 23 - Monday 25 August  
11am - 8pm**

**Sandwell Valley Park, West  
Bromwich B71 4BG**

**www.one-fest.co.uk**

**Eventbrite**





# MULTI-SKILLS SUMMER CAMP

**BOXCLEVER**  
Mentoring

**Activities including boxing, football, dodgeball,  
first aid skills + BSL**



> **Monday 28th - Thursday 31st July**  
**Uplands Manor Primary School, B67 6HY**

> **Monday 4th - Thursday 7th August**  
**St. Michaels CE High School, B65 9AN**

> **Monday 18th - Thursday 21st August**  
**Phoenix Collegiate, B71 2BX**

**Free for any  
8-16 year old  
Scan the QR  
code to sign up**

**SCAN ME!**



**10am - 2pm each day**



@boxclevercj BoxClever Mentoring

**Please note, this is not a HAF Camp so each young  
person will be expected to bring their own packed  
lunch and enough drinks for the day.**



## SUMMER HAF MULTI-SPORT CAMP

10:00AM - 2:00PM | AGE 7 - 16

TUESDAY, JULY 22 - FRIDAY, JULY 25, 2025  
MONDAY, JULY 28 - THURSDAY, JULY 31, 2025

**GEORGE SALTER ACADEMY**  
DAVEY ROAD, WEST BRIMMIGH B70 9UN

MONDAY, AUGUST 4 - THURSDAY, AUGUST 7, 2025  
MONDAY, AUGUST 11 - THURSDAY, AUGUST 14, 2025

**ORMISTON SANDWELL COMMUNITY ACADEMY**  
LOWER CITY RD, TIVERTON, SANDWELL B68 3HE

MONDAY, AUGUST 18 - THURSDAY, AUGUST 21, 2025

**SANDWELL ACADEMY**  
HALFORD LANE, WEST BRIMMIGH B71 4LG







CHECK OUT OUR ACTIVITIES,  
SCAN THE QR CODE  
AND SEARCH THE ALBION FOUNDATION



For more information, contact:  
darryl\_hickman@albionfoundation.co.uk





# THE GO PLAY TIPTON FUN DAY!

**WEDNESDAY 23<sup>RD</sup> JULY**  
**12 NOON – 4PM**  
**FARLEY PARK**  
**WHITEHALL ROAD**  
**B70 0HF**

**FEATURING**  
**STEVE THE JUGGLER**  
**&**  
**BLACK COUNTRY**  
**TOURING**



ALL GO PLAY SESSIONS ARE FREE, OPEN ACCESS (SO COME ALONG AT ANY TIME) AND DO NOT REQUIRE BOOKING. SESSIONS ARE AIMED AT FAMILIES WITH CHILDREN AGED 6-12 AND UP TO 19 WITH ADDITIONAL NEEDS.

SESSIONS ARE NOT DROP-OFF SESSIONS.

FOR MORE INFORMATION CONTACT JOHNNY AT:

JOHNNY.LOMAX@GROUNDWORK.ORG.UK

0707872857437 OR VISIT [HTTPS://GOPLAYSANDWELL.CO.UK](https://goplaysandwell.co.uk)

# GO PLAY SANDWELL FREE PLAY SESSIONS

## SUMMER HOLIDAY SESSIONS IN TIPTON:

Week	Wednesday	Thursday
23 <sup>rd</sup> and 24 <sup>th</sup> July	12pm-4pm <b>Tipton Play Day Event!</b> Farley Park (B70 0QH)	
30 <sup>th</sup> and 31 <sup>st</sup> July	10am-12pm Tipton Library (DY4 8SR) 10am-12pm 1pm-4pm Victoria Park (DY4 8SD)	10am-12pm Farley Park (B70 0QH) 1pm-4pm Tibbington Play Area (DY4 9QT)
6 <sup>th</sup> and 7 <sup>th</sup> August	<b>Sandwell Play Day!</b> Sandwell Valley Visitors centre (B71 4BG) 12pm-4pm	
13 <sup>th</sup> and 14 <sup>th</sup> August	10am-12pm Tipton Library (DY4 8SR)	10am-12pm Farley Park (B70 0QH)
20 <sup>th</sup> and 21 <sup>st</sup> August	1pm-4pm Victoria Park (DY4 8SD)	1pm-4pm Jubilee Park (DY4 ORL)
27 <sup>th</sup> and 28 <sup>th</sup> August		

JOIN US FOR CRAFTS, LOOSE PARTS PLAY, TABLETOP GAMES AND SO MUCH MORE!  
ALL GO PLAY SESSIONS ARE FREE, OPEN ACCESS (SO COME ALONG AT ANY TIME) AND DO NOT REQUIRE BOOKING. SESSIONS ARE AIMED AT FAMILIES WITH CHILDREN AGED 6-12 AND UP TO 19 WITH ADDITIONAL NEEDS.

SESSIONS ARE NOT DROP-OFF SESSIONS.

FOR MORE INFORMATION CONTACT JOHNNY.LOMAX@GROUNDWORK.ORG.UK

Funded by:



For more information, please contact [johnny.lomax@groundwork.org.uk](mailto:johnny.lomax@groundwork.org.uk) or 07872 857437



THE HUB PROGRAMME PRESENTS

# OUTDOORS MINI-EXPLORERS

NATURE BASED ACTIVITIES FOR 0 TO 2 YEARS OLD BABIES AND TODDLERS AND THEIR FAMILIES. COME AND DISCOVER NATURE WITH US LEARNING THROUGH PLAY



## WEEKLY POP-UP SESSIONS

JOIN US!

FROM 10:30 - 12:00  
SOUTH SANDWELL

WEST SMETHWICK PARK  
B67 7JJ

TUESDAY 22/07  
TUESDAY 29/07  
TUESDAY 05/08

HADEN HILL PARK  
B64 7JU

FRIDAY 25/07  
FRIDAY 01/08  
FRIDAY 08/08

BARNFORD PARK  
B68 8ED

TUESDAY 12/08  
TUESDAY 19/08  
TUESDAY 26/08

LIGHTWOODS PARK  
B67 5DP

FRIDAY 15/08  
FRIDAY 22/08  
FRIDAY 29/08

Contact us in Facebook and Instagram @thehubprogramme / Send us an email hubprogramme@groundwork.org.uk

Created by:



Supported by:



Funded by:



## Holiday Activities - SEND

Sandwell Holiday Activities offer exciting opportunities for children who live or go to school in Sandwell to take part in activities during school holidays. There is lots of choice right across Sandwell with different activities happening in each town. Activities are for children aged between school age 5-16 years.

Summer activities will run from Monday 21st July 2025 - Saturday 30th August 2025 (excluding Sundays and Bank holidays)

If your child is eligible for HAF then you will have received an email or text with a HAF activity voucher containing unique HAF codes for your child and a link that enables you to book activities.

If your child does not meet the criteria, you can find other activities on our website (some may have a charge attached) visit <https://holidayactivities.sandwell.gov.uk/>

Here are some of our SEND specific activities across Sandwell:

### Inclusive provision for children with SEND:

**KIDS Specialist Provision** - Provide borough wide activities focused around the social, physical, sensory and emotional needs of the children / young people with SEND. Activities will take place at Wednesbury Leisure Centre, The Chestnut Carvery, Langley Park Lodge, Brook St Community Centre, Odeon, New Square, West Bromwich, Spacehoppers Play Zone, Good Sheppard Church, West Bromwich Leisure Centre and Sandwell Valley Park.

**Fantastic Journeys at Windmill Community Centre** - Fantastic Journeys is a social enterprise providing a multi-sensory music and movement session for children with additional needs.

**The Albion Foundation at Portway Lifestyle Centre** - Providing a wide range of multi-sports and many other enriching activities for children with SEND.

**4 Community Trust SEND at 4 Community Trust Hub in West Bromwich** - Offer a range of activities, arts & crafts, drama, dance, cooking, healthy eating, nutrition workshops, sports, digital, games, social play, themed activities, sensory play plus much more.

**Real Arts Workshop at Wednesbury Library** - Bespoke creative experiences including Art, Crafts, British Sign Language (BSL), and Music/Sign Song, designed to challenge and engage learners.

### Inclusive provision to meet SEND needs:

**Ideal For All at Salop Drive Market Garden & Barlow Road Community Garden** - Welly to Belly! Activities focused around the social, physical, sensory and emotional needs of the children / young people with SEND.

**Warrens Hall Riding School at Oakham Road** - The activities include stable management, lunch, pony grooming, and horseback riding. We also offer craft and sensory activities.

**Forge Mill Farm at Forge Lane** - Activities will include exploring the forest and farm, and nature-based crafts, in a safe, fun environment designed for young people with SEND.

To contact the providers or find out more search SEND on our website!

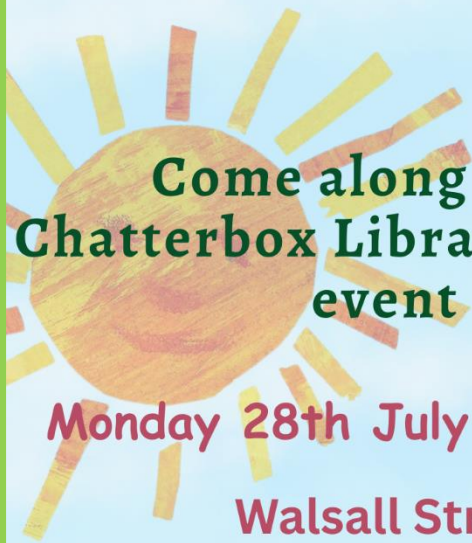
Go Play Sandwell - FREE play for all ages <https://goplaysandwell.co.uk/>

Stay Social Like us on Facebook @SandwellHAF

Click [HERE](#)







## Come along to our Chatterbox Library summer event



Monday 28th July @ Wednesbury Library

Walsall Street, Wednesbury  
WS10 9EH

10:00 am - 11:30 am

### The Very Hungry Caterpillar



Play Crafts Stories Rhymes  
For 0-5 year olds

For more info ring: 01215441393 or email:  
[early.years@singlepointplus.org](mailto:early.years@singlepointplus.org)

Supported by



## Come along to our Chatterbox Library summer event



Monday 11<sup>th</sup> August @ Stone Cross Library

Beverley Road, West Bromwich

B71 2LH

10:00 am - 11:30 am

### The Gruffalo



Play Crafts Rhymes Stories  
For 0-5 year olds

For more info ring: 01215441393 or  
email:

[early.years@singlepointplus.org](mailto:early.years@singlepointplus.org)



Supported by





# Come along to our Chatterbox Library summer event



Tuesday 19<sup>th</sup> August @ Hamstead Library

Tanhouse Centre, Hamstead Road,

Great Barr

B43 5EL

2.00pm till 3.00pm

## Squash and a Squeeze



Play Crafts Rhymes Stories  
For 0-5 year olds

For more info ring: 01215441393 or email:  
[early.years@singlepointplus.org](mailto:early.years@singlepointplus.org)

Supported by



# DEVELOPING STARS STAY AND PLAY



Pop in and join your local peer  
support worker for a chat about  
your babies development.



Being a parent with a new baby, do you worry about  
any of the following...

- Sleeping/eating difficulties
- Development
- Routine Adjustments
- Getting pre school ready
- Playing and learning
- Friendly professional advice
- Socialising with other families

we are here to support you and your  
baby with...

Lets tackle parenting worries or concerns  
together!

Coneygre Early Years and  
child Development Centre  
Sedgley Road East  
Tipton  
DY48UH  
012156928 60

First Session - Monday 28th April 2025  
(Then the Last Monday of every month)  
1.00 2.30pm

Peer Support Worker contact details:  
Tel: 0121 544 1393 Email: [early.years@singlepointplus.org](mailto:early.years@singlepointplus.org)





## Buggy Walk at Sandwell Valley Country Park

Visit your local park, spend time with your little ones, get active and meet other new parents!

 **Tuesdays, 10am-12pm.**

 **Sandwell Valley Country Park, West Bromwich, B71 4BG.**

Meet at the Courtyard Kitchen Cafe at the Sandwell Valley Visitors Centre at 10am. First walk Tuesday 15<sup>th</sup> July.

 **Contact us: [sandwellags@theaws.org](mailto:sandwellags@theaws.org)**

Supported by:



 @tawsociety  
 @theaws  
 The Active Wellbeing Society



# TIPTON PRE-LOVED SCHOOL UNIFORM BANK



**FREE**

Have you got school uniform you no longer need?

Drop off any pre-loved, clean uniform you no longer need so other local children can benefit from it!

**Drop off:**

-  **Tuesday 22 July 2025 – Friday 25 July 2025**
-  **10am – 2pm**
-  **Jubilee Park Community Centre, Powis Avenue, Tipton, DY4 0RJ**



**Need some school uniform for the new term?**

Come along to see what school uniform is available and take what you need.

**Collection:**

**Friday 15 August 2025**  
**10am – 1pm**

**Jubilee Park Community Centre, Powis Avenue, Tipton, DY4 0RJ**

**Call 0121 520 0234 for more information!**



The Community Link   
Cradley Heath





## SDCA COCHLEAR IMPLANT SUPPORT GROUP FOR CHILDREN AND YOUNG PEOPLE (AGES 8-11)

The **SDCA Cochlear Implant Support Group (Ages 8-11)** is a welcoming space where children with cochlear implants can come together to connect, share their experiences, and support one another in a fun and understanding environment.

This group meets on a monthly basis at the Friar Park Millennium Centre.

📍 Location: Friar Park Millennium Centre, Friar Park Road, Wednesbury, WS10 0JS

📅 Monthly Meetings.

### Our Goal:

- Combat loneliness and boost mental well-being
- Provide a safe space for open discussion about cochlear implant experiences
- Share helpful tips and advice.

### Guest speakers may cover topics such as:

- 🧠 Caring for your cochlear implant as children and young people
- ⚽ Sports and activities you can enjoy with a cochlear implant
- 💪 Handling school and social challenges with confidence
- 👉 Building confidence and embracing your identity.

This event will also feature **fun activities** to help your children and young people **connect** with others and feel **supported** in their cochlear implant journey.

## For More Information or to Sign Up..

### Contact:

**Craig Potheary, Wellbeing Coach**



**Email: [craig\\_potheary@sdca.co.uk](mailto:craig_potheary@sdca.co.uk)**



**Text/WhatsApp/FaceTime: 07791 921011**



## COCHLEAR IMPLANTS GROUP FOR CHILDREN (8-11 YEARS)



**Scan me!**

Cochlear Implants Group  
for  
children  
(8-11 years)

**Complete the survey by telling us what you want from the group!**

Your insights are invaluable. **Participate in our survey today!**



**[craig\\_potheary@sdca.co.uk](mailto:craig_potheary@sdca.co.uk)**



**07791 921011 Text/Facetime/WhatsApp**



**@DEAF.SANDWELL**



**[WWW.SDCA.CO.UK](http://WWW.SDCA.CO.UK)**



**@SANDWELLDEAF.COM**



## SDCA COCHLEAR IMPLANT SUPPORT GROUP FOR CHILDREN AND YOUNG PEOPLE (AGES 11-17)

The SDCA Cochlear Implant Support Group (Ages 11-17) is a welcoming space where children and young people with cochlear implants can come together to connect, share their experiences, and support one another in a fun and understanding environment.

This group meets on a monthly basis at the Friar Park Millennium Centre.

📍 Location: Friar Park Millennium Centre, Friar Park Road, Wednesbury, WS10 0JS

📅 Monthly Meetings.

### Our Goal:

- Combat loneliness and boost mental well-being
- Provide a safe space for open discussion about cochlear implant experiences
- Share helpful tips and advice.

### Guest speakers may cover topics such as:

- 🧠 Caring for your cochlear implant as children and young people
- ⚽ Sports and activities you can enjoy with a cochlear implant
- 💪 Handling school and social challenges with confidence
- 👉 Building confidence and embracing your identity.

This event will also feature **fun activities** to help your children and young people **connect** with others and feel **supported** in their cochlear implant journey.

## For More Information or to Sign Up,

### Contact:

**Craig Pothecary, Wellbeing Coach**



**Email: [craig\\_pothecary@sdca.co.uk](mailto:craig_pothecary@sdca.co.uk)**



**Text/WhatsApp/FaceTime: 07791 921011**



Sandwell Deaf Community Association

## COCHLEAR IMPLANTS GROUP FOR CHILDREN & YOUNG PEOPLE (11-17 YEARS)



**Complete the survey by telling us what you want from the group!**

Your insights are invaluable. **Participate in our survey today!**



**[craig\\_pothecary@sdca.co.uk](mailto:craig_pothecary@sdca.co.uk)**



**07791 921011 Text/Facetime/WhatsApp**



**@DEAF.SANDWELL**



**[WWW.SDCA.CO.UK](http://WWW.SDCA.CO.UK)**



**@SANDWELLDEAF.COM**



FUNDED BY



POWERED by  
**CAN**

# GO PLAY

JULY ACTIVITIES

# SESSIONS

[goplaysandwell.co.uk](http://goplaysandwell.co.uk)



SCAN FOR  
CALENDAR DATES  
[www.goplaysandwell.co.uk](http://www.goplaysandwell.co.uk)

or click [HERE](#)

[#goplaysandwell](#)

Contact for more information  
[hello@poweredbycan.org](mailto:hello@poweredbycan.org)

[in](#) [d](#) [f](#) [@](#) [x](#) [@pbcanofficial](#)

[goplaysandwell.co.uk](http://goplaysandwell.co.uk)





## WEDNESBURY

### JULY 2025

MONDAY	TUESDAY	WEDNESDAY	THURSDAY	FRIDAY
30	1	2	3	4
●	HILL TOP PARK 15:00-17:30 B70 ORZ	●	BRUNSWICK PARK 15:00 - 17:30 WS10 9HH	●
7	8	9	10	11
●	HILL TOP PARK 15:00-17:30 B70 ORZ	●	BRUNSWICK PARK 15:00 - 17:30 WS10 9HH	●
14	15	16	17	18
●	HILL TOP PARK 15:00-17:30 B70 ORZ	●	BRUNSWICK PARK 15:00 - 17:30 WS10 9HH	●
21	22	23	24	25
●	●	●	BRUNSWICK PARK 11:00 - 16:00 WS10 9HH	HYDES ROAD PARK 11:00 - 16:00 WS10 0DH
28	29	30	31	
●	BRUNSWICK PARK 11:00 - 16:00 WS10 9HH	PLAY DAY EVENT LIGHTWOODS PARK 12:00 - 16:00 B67 5DP	HYDES ROAD PARK 11:00 - 16:00 WS10 0DH	●



## SMETHWICK

### JULY 2025

MONDAY	TUESDAY	WEDNESDAY	THURSDAY	FRIDAY
30	1	2	3	4
●	UNETT STREET OPEN SPACE 15:00 - 17:30 B66 3SS	HARRY MITCHELL PARK 15:00 - 17:30 B67 6AW	●	●
7	8	9	10	11
●	UNETT STREET OPEN SPACE 15:00 - 17:30 B66 3SS	HARRY MITCHELL PARK 15:00 - 17:30 B67 6AW	●	●
14	15	16	17	18
●	UNETT STREET OPEN SPACE 15:00 - 17:30 B66 3SS	HARRY MITCHELL PARK 15:00 - 17:30 B67 6AW	●	●
24	25	26	27	28
●	LIGHTWOODS PARK 11:00 - 16:00 B67 5DP	HARRY MITCHELL PARK 11:00 - 16:00 B67 6AW	●	●
28	29	30	31	
VICTORIA PARK 11:00 - 16:00 B66 3NT	●	PLAY DAY EVENT LIGHTWOODS PARK 12:00 - 16:00 B67 5DP	●	●





## WEST BROMWICH

JULY 2025

MONDAY	TUESDAY	WEDNESDAY	THURSDAY	FRIDAY
30	1	2	3	4
MARSH LANE GREEN SPACE 15:00 - 17:30 B71 2JN		KENRICK PARK 15:00 - 17:30 B70 6DU		MARL HOLE PARK 15:00 - 17:30 B70 9NT CHARLEMONT PLAYING FIELD 15:00 - 17:30 B71 3PJ
7	8	9	10	11
DENBIGH DRIVE GREEN SPACE 15:00 - 17:30 B71 2SH		KENRICK PARK 15:00 - 17:30 B70 6DU		MARL HOLE PARK 15:00 - 17:30 B70 9NT CHARLEMONT PLAYING FIELD 15:00 - 17:30 B71 3PJ
14	15	16	17	18
DENBIGH DRIVE GREEN SPACE 15:00 - 17:30 B71 2SH		KENRICK PARK 15:00 - 17:30 B70 6DU		MARL HOLE PARK 15:00 - 17:30 B70 9NT CHARLEMONT PLAYING FIELD 15:00 - 17:30 B71 3PJ
24	25	26	27	28
KENRICK PARK 15:00 - 17:30 B70 6DU	OAK HOUSE MUSEUM 11:00 - 16:00 B70 8HJ	RED HOUSE PARK 11:00 - 16:00 B43 6NA		CHARLEMONT PLAYING FIELD 11:00 - 16:00 B71 3PJ
28	29	30	31	1
RED HOUSE PARK 11:00 - 16:00 B43 6NA	OAK HOUSE MUSEUM 11:00 - 16:00 B70 8HJ	PLAY DAY EVENT LIGHTWOODS PARK 12:00 - 16:00 B67 5DP	KENRICK PARK 15:00 - 17:30 B70 6DU	CHARLEMONT PLAYING FIELD 11:00 - 16:00 B71 3PJ

## OLDBURY

JULY 2025

MONDAY	TUESDAY	WEDNESDAY	THURSDAY	FRIDAY
30	1	2	3	4
BROADWELL PARK 15:00 - 17:30 B69 4AE			LANGLEY PARK 15:00 - 17:30 B69 4SL	
7	8	9	10	11
BROADWELL PARK 15:00 - 17:30 B69 4AE			LANGLEY PARK 15:00 - 17:30 B69 4SL	
14	15	16	17	18
BROADWELL PARK 15:00 - 17:30 B69 4AE			LANGLEY PARK 15:00 - 17:30 B69 4SL	
24	25	26	27	28
TIVIDALE PARK 12:00 - 14:30 B69 2HU			LANGLEY PARK 11:00 - 16:00 B69 4SL	
28	29	30	31	1
		PLAY DAY EVENT LIGHTWOODS PARK 12:00 - 16:00 B67 5DP		TIVIDALE PARK 11:00 - 16:00 B69 2HU



FUNDED BY



**Go play**  
Sandwell

POWERED *by*  
**CAN**

# GO PLAY AUGUST ACTIVITIES SESSIONS

[goplaysandwell.co.uk](http://goplaysandwell.co.uk)



SCAN FOR  
CALENDAR DATES  
[www.goplaysandwell.co.uk](http://www.goplaysandwell.co.uk)

or click **HERE**

Contact for more information  
[hello@poweredbycan.org](mailto:hello@poweredbycan.org)

     @pbcanofficial

[goplaysandwell.co.uk](http://goplaysandwell.co.uk)

**#goplaysandwell**



## WEDNESBURY

### AUGUST 2025

MONDAY	TUESDAY	WEDNESDAY	THURSDAY	FRIDAY
28	29	30	31	1
●	BRUNSWICK PARK 11:00 - 18:00 WS10 9HH	PLAY DAY EVENT LIGHTWOODS PARK 12:00 - 18:00 B67 5DP	HYDES ROAD PARK 11:00 - 18:00 WS10 0DH	●
4	5	6	7	8
●	●	PLAY DAY EVENT SANDWELL VALLEY 12:00 - 18:00 B71 4BG	HYDES ROAD PARK 11:00 - 18:00 WS10 0DH	●
11	12	13	14	15
●	●	●	BILSTON PLAY AREA 11:00 - 18:00 WS10 7JD	HILL TOP PARK 11:00 - 18:00 B70 GRZ
18	19	20	21	22
●	●	PLAY DAY EVENT BROMWICH HALL MUSEUM 12:00 - 18:00 B71 2EA	BILSTON PLAY AREA 11:00 - 18:00 WS10 7JD	●
25	26	27	28	29
●	HILL TOP PARK 11:00 - 18:00 B70 GRZ	●	BILSTON PLAY AREA 11:00 - 18:00 WS10 7JD	●

## SMETHWICK

### AUGUST 2025

MONDAY	TUESDAY	WEDNESDAY	THURSDAY	FRIDAY
28	29	30	31	1
VICTORIA PARK 11:00 - 18:00 B66 3NT	●	PLAY DAY EVENT LIGHTWOODS PARK 12:00 - 18:00 B67 5DP	●	●
4	5	6	7	8
●	BRASSHOUSE COMMUNITY CENTRE 11:00 - 18:00 B66 1BA	PLAY DAY EVENT SANDWELL VALLEY 12:00 - 18:00 B71 4BG	●	●
11	12	13	14	15
HARRY MITCHELL PARK 11:00 - 18:00 B67 6AW	VICTORIA PARK 11:00 - 18:00 B66 3NT	●	●	●
18	19	20	21	22
HARRY MITCHELL PARK 11:00 - 18:00 B67 6AW	VICTORIA PARK 11:00 - 18:00 B66 3NT	PLAY DAY EVENT BROMWICH HALL MUSEUM 12:00 - 18:00 B71 2EA	●	●
25	26	27	28	29
●	VICTORIA PARK 11:00 - 18:00 B66 3NT	HARRY MITCHELL PARK 11:00 - 18:00 B67 6AW	●	●



## WEST BROMWICH

AUGUST 2025

MONDAY	TUESDAY	WEDNESDAY	THURSDAY	FRIDAY
28	29	30	31	1
RED HOUSE PARK 11:00 - 18:00 B43 6NA	OAK HOUSE MUSEUM 11:00-18:00 B70 8HJ	PLAY DAY EVENT LIGHTWOODS PARK 12:00 - 18:00 B67 5DP	KENRICK PARK 11:00 - 18:00 B70 6DU	CHALEMONT PLAYING FIELD 11:00 - 18:00 B71 3PJ
4	5	6	7	8
BROMWICH HALL MUSEUM 10:00 - 15:00 B71 2EA	OAK HOUSE MUSEUM 11:00-18:00 B70 8HJ	PLAY DAY EVENT SANDWELL VALLEY 12:00 - 18:00 B71 4BG		CHALEMONT PLAYING FIELD 11:00 - 18:00 B71 3PJ
11	12	13	14	15
BROMWICH HALL MUSEUM 10:00 - 15:00 B71 2EA	OAK HOUSE MUSEUM 11:00-18:00 B70 8HJ	FAMILY FUN DAY KESTEVEN 12:00 - 18:00 B71 1JQ		
18	19	20	21	22
REDWOOD ROAD PARK 11:00 - 18:00 WS5 4LB	OAK HOUSE MUSEUM 11:00-18:00 B70 8HJ	PLAY DAY EVENT BROMWICH HALL MUSEUM 12:00 - 18:00 B71 2EA		MARL HOLE PARK 11:00 - 18:00 B70 9NT CHALEMONT PLAYING FIELD 11:00 - 18:00 B71 3PJ
25	26	27	28	29
	BROMWICH HALL MUSEUM 10:00 - 15:00 B71 2EA	KENRICK PARK 11:00 - 18:00 B70 6DU	CHALEMONT PLAYING FIELD 11:00 - 18:00 B71 3PJ	MARL HOLE PARK 11:00 - 18:00 B70 9NT

## OLDBURY

AUGUST 2025

MONDAY	TUESDAY	WEDNESDAY	THURSDAY	FRIDAY
28	29	30	31	1
		PLAY DAY EVENT LIGHTWOODS PARK 12:00 - 18:00 B67 5DP		TIVIDALE PARK 11:00 - 18:00 B69 2HU
4	5	6	7	8
		PLAY DAY EVENT SANDWELL VALLEY 12:00 - 18:00 B71 4BG	LANGLEY PARK 11:00 - 18:00 B69 4SL	
11	12	13	14	15
			LANGLEY PARK 11:00 - 18:00 B69 4SL	TIVIDALE PARK 11:00 - 18:00 B69 2HU
18	19	20	21	22
		PLAY DAY EVENT BROMWICH HALL MUSEUM 12:00 - 18:00 B71 2EA	LANGLEY PARK 11:00 - 18:00 B69 4SL	TIVIDALE PARK 11:00 - 18:00 B69 2HU
25	26	27	28	29
			LANGLEY PARK 11:00 - 18:00 B69 4SL	TIVIDALE PARK 11:00 - 18:00 B69 2HU





Sandwell welcomes thousands of children and young people to participate in enriching activities, create the best experiences and grow in confidence - providing opportunities to play, have fun, learn new skills and make memories that will last a lifetime! For more information about the programme and to find activities near you click [HERE](#)



Explore things to see and do in Sandwell, discover unexpected hidden gems, browse what's on in each of our Towns and join in with the colourful and diverse calendar of festivals and events – have a browse [HERE](#)

## Planning ahead.....

**Let's get**

**School Ready**

**Starting School in September?**

5 Aug ~ 14:00 - 16:00 ~ Bleakhouse Library

8 Aug ~ 11:00 - 13:00 ~ Oakham Library

12 Aug ~ 10:00 - 12:00 ~ Lyng Health Centre

**with the Sandwell School Nurses**

**Sandwell School Health Nursing**  
Making a difference

**Come have a chat with us about...**

- | Healthy Lifestyles | Sleeping | Toileting | Emotional Wellbeing | Oral Health | Hygiene | Accident Prevention | Headlice | & More |

**Contact us for more info**

**Sandwell School Nursing Team**  
0121 612 2974

@sandwellschoolnurses  
Sandwell School Nursing



# Free online workshops.....

## Fussy Eating Free online workshop



Join  
us!

Fed up with  
stressful  
mealtimes?  
We're here  
to help...



As parents we want our children to eat well  
– and to enjoy mealtimes together

Come along and get support and new ideas for:

- How to encourage your child to try new foods - and begin to enjoy them!
- Child-friendly foods that provide what they need to grow and be healthy
- Happier family mealtimes

### Event details:

8 September 2025  
Time: 19:00-20:15

For more information and  
to book please contact:-

debi.madden@barnardos.  
org.uk

## Eating well for less Free workshop



Join  
us

Healthy eating  
doesn't have to  
be expensive  
- and can be  
delicious!



Would you like to eat more healthily as a  
family, but you're not sure where to begin or  
how to manage it without breaking the bank?

This workshop helps the whole family to eat well for  
less including:

- Tips for a cheaper, healthy shopping basket
- Healthy meal planning to make the most of the food you buy
- Recipes for tasty, simple and healthy low-cost meals

### Event details:

online

Tuesday 18 September  
10:00-11:30

For further information or to book  
a place please contact Debi  
Madden

debi.madden@barnardos.org.uk



## Looking after ourselves

### Free online workshops



Find out ways to  
look after  
yourself and  
stay calm

Join  
us!



Family life can be stressful. This workshop helps you to find ways to look after yourself and stay calm so you can juggle everything better.

#### Come along and:

- Understand the benefits of recharging our batteries for emotional and physical health
- Share feelings and develop realistic expectations and coping strategies
- Overcome feelings of guilt and failure
- Gain practical strategies to reduce the stresses of family life

#### More information

Time: 19:00-20:30  
22 September 2025

#### Book with:

debi.madden@barn  
ardos.org.uk

## Understanding children's behaviour



### Free online workshops

Find out  
what's driving  
your child's  
behaviour

Join  
us!



#### Come along and:

- Understand feelings and needs behind children's behaviour
- Discover the importance of listening to children, and how it can support meeting their needs
- Explore responding with empathy, and how it can positively influence children's behaviour

#### More information

Online  
10:00 - 11:30  
Tuesday 30th  
September 2025  
To book a space  
contact:  
debi.madden@barn  
ardos.org.uk